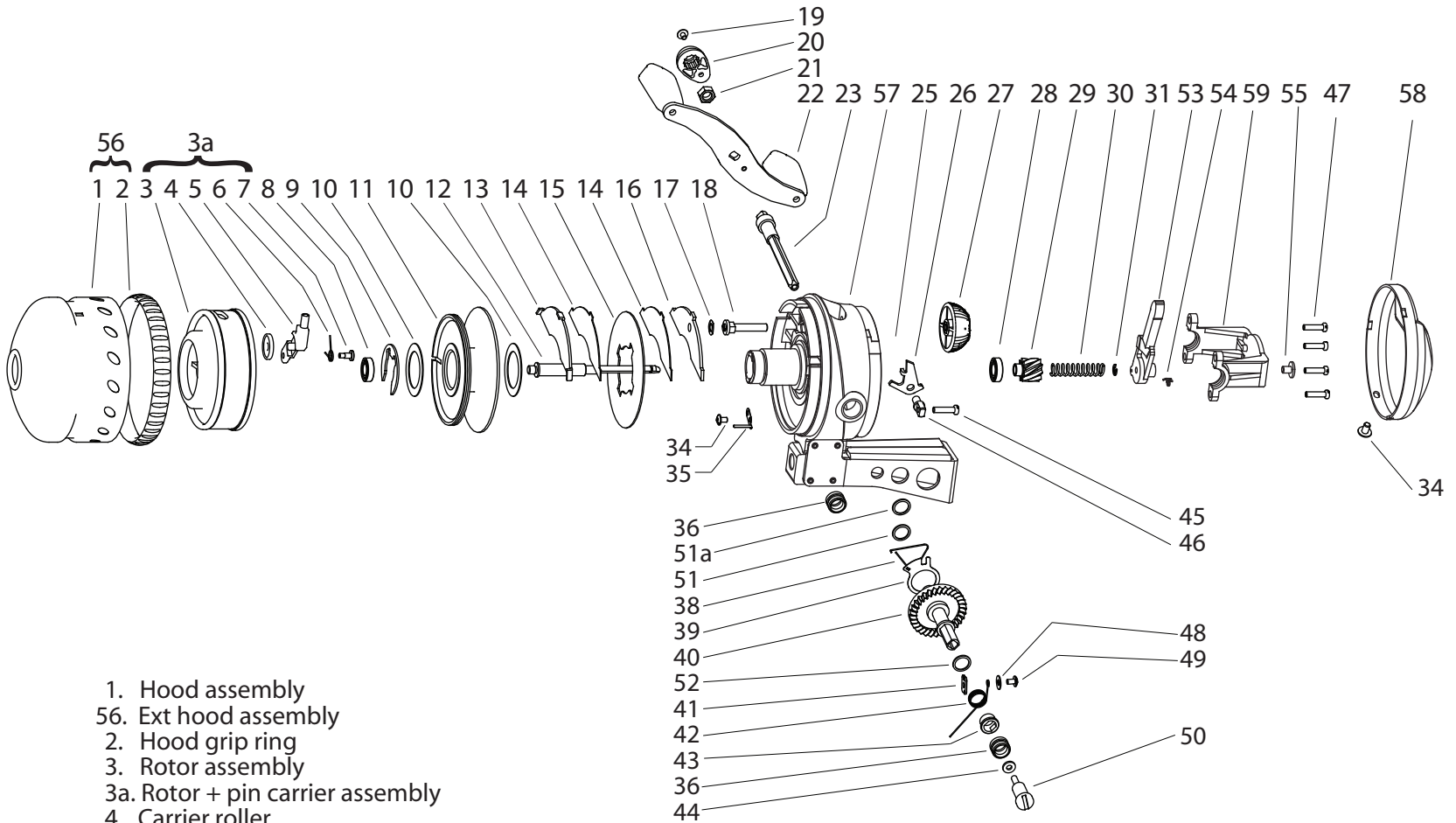


MZY III40



- 1. Hood assembly
- 56. Ext hood assembly
- 2. Hood grip ring
- 3. Rotor assembly
- 3a. Rotor + pin carrier assembly
- 4. Carrier roller
- 5. Pin carrier assembly
- 6. Carrier spring
- 7. Carrier screw
- 8. Ball bearing (6.5x13x3.5)
- 9. Spool clip
- 10. Spool washer (2)
- 11. Spool assembly
- 12. Main shaft
- 13. Front caliper
- 14. Friction pad (2)
- 15. Drag disk
- 16. Back caliper
- 17. Drag spring
- 18. Drag plunger
- 19. Handle nut cover screw
- 20. Handle nut cover
- 21. Handle nut
- 22. Handle Assembly
- 23. Handle shaft assembly

- 57. Main body assembly with bracket
- 25. Pawl shim
- 26. A/R pawl
- 27. Drag dial
- 28. Ball bearing (7x14x3.5)
- 29. Pinion gear
- 30. Mainshaft spring
- 31. Spring retainer
- 58. lever back cover
- 33. Push button
- 34. Retainer screw
- 35. Clicker
- 36. Main gear bushing (2)
- 59. lever bushing retainer(2)
- 38. A/R friction spring
- 39. A/R retainer plate

- 40. Main gear
- 41. Coil anchor plate
- 42. Cushion coil
- 43. Coil bushing
- 44. Handle screw washer
- 45. A/R pawl post screw
- 46. A/R pawl post
- 47. Bushing retainer screw (4)
- 48. Coil screw washer
- 49. Coil screw
- 50. Handle screw
- 51. Main gear shim
- 51a. Main gear shim
- 52. Coil bushing shim
- 53. Push lever
- 54. Push Lever spring
- 55. Push lever screw