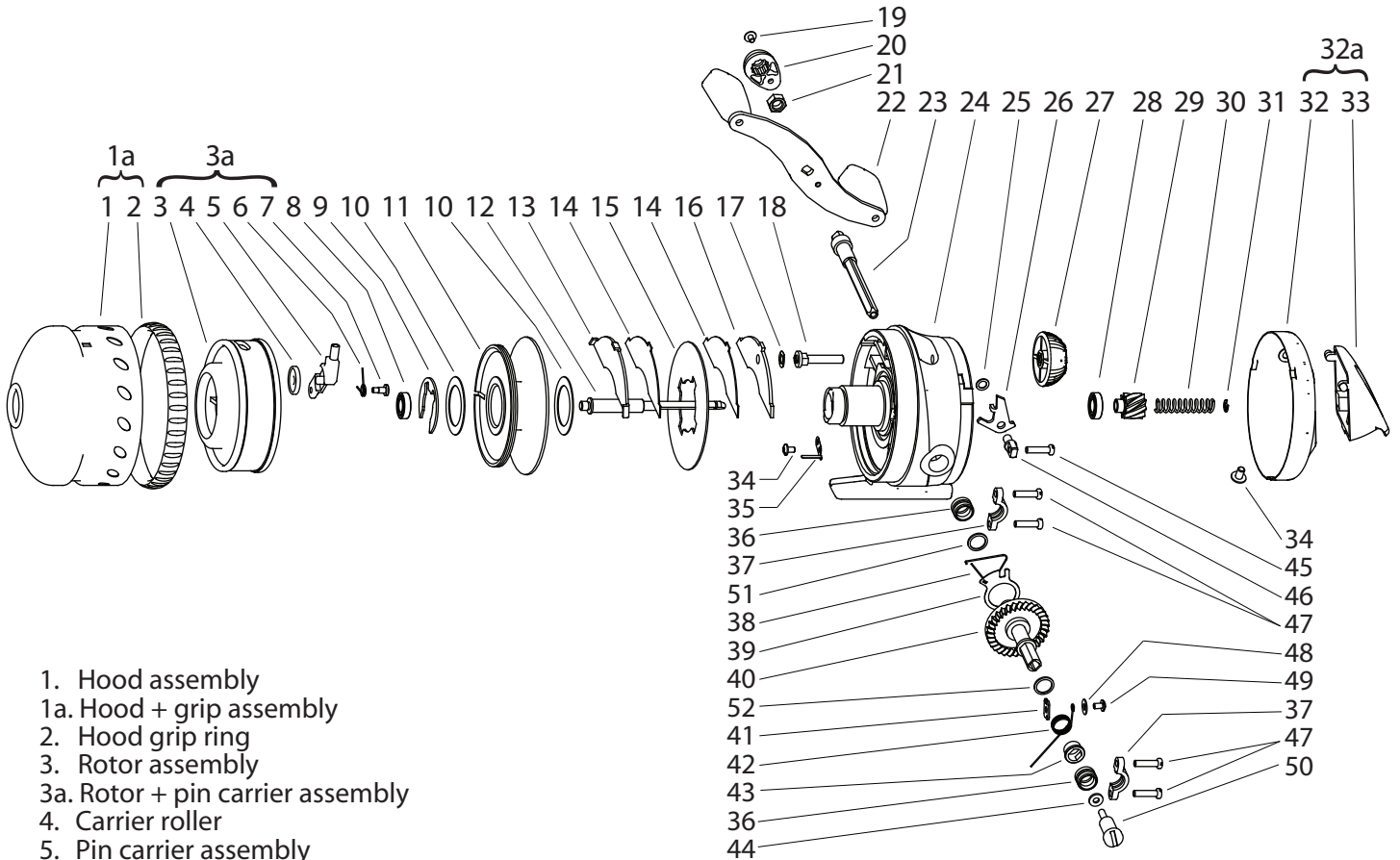




XTREME DUTY 1067-XD BOWFISHING REEL



- | | | |
|---|--|--|
| <ul style="list-style-type: none"> 1. Hood assembly 1a. Hood + grip assembly 2. Hood grip ring 3. Rotor assembly 3a. Rotor + pin carrier assembly 4. Carrier roller 5. Pin carrier assembly 6. Carrier spring 7. Carrier screw 8. Ball bearing (6.5x13x3.5) 9. Spool clip 10. Spool washer (2) 11. Spool assembly 12. Main shaft 13. Front caliper 14. Friction pad (2) 15. Drag disk 16. Back caliper 17. Drag spring 18. Drag plunger 19. Handle nut cover screw 20. Handle nut cover 21. Handle nut 22. Handle Assembly 23. Handle shaft assembly | <ul style="list-style-type: none"> 24. Main body assembly 25. Pawl shim 26. A/R pawl 27. Drag dial 28. Ball bearing (7x14x3.5) 29. Pinion gear 30. Mainshaft spring 31. Spring retainer 32. Back cover 32a. Back cover assembly 33. Push button 34. Retainer screw 35. Clicker 36. Main gear bushing (2) 37. Bushing retainer (2) | <ul style="list-style-type: none"> 38. A/R friction spring 39. A/R retainer plate 40. Main gear 41. Coil anchor plate 42. Cushion coil 43. Coil bushing 44. Handle screw washer 45. A/R pawl post screw 46. A/R pawl post 47. Bushing retainer screw (4) 48. Coil screw washer 49. Coil screw 50. Handle screw 51. Main gear shim 52. Coil bushing shim |
|---|--|--|